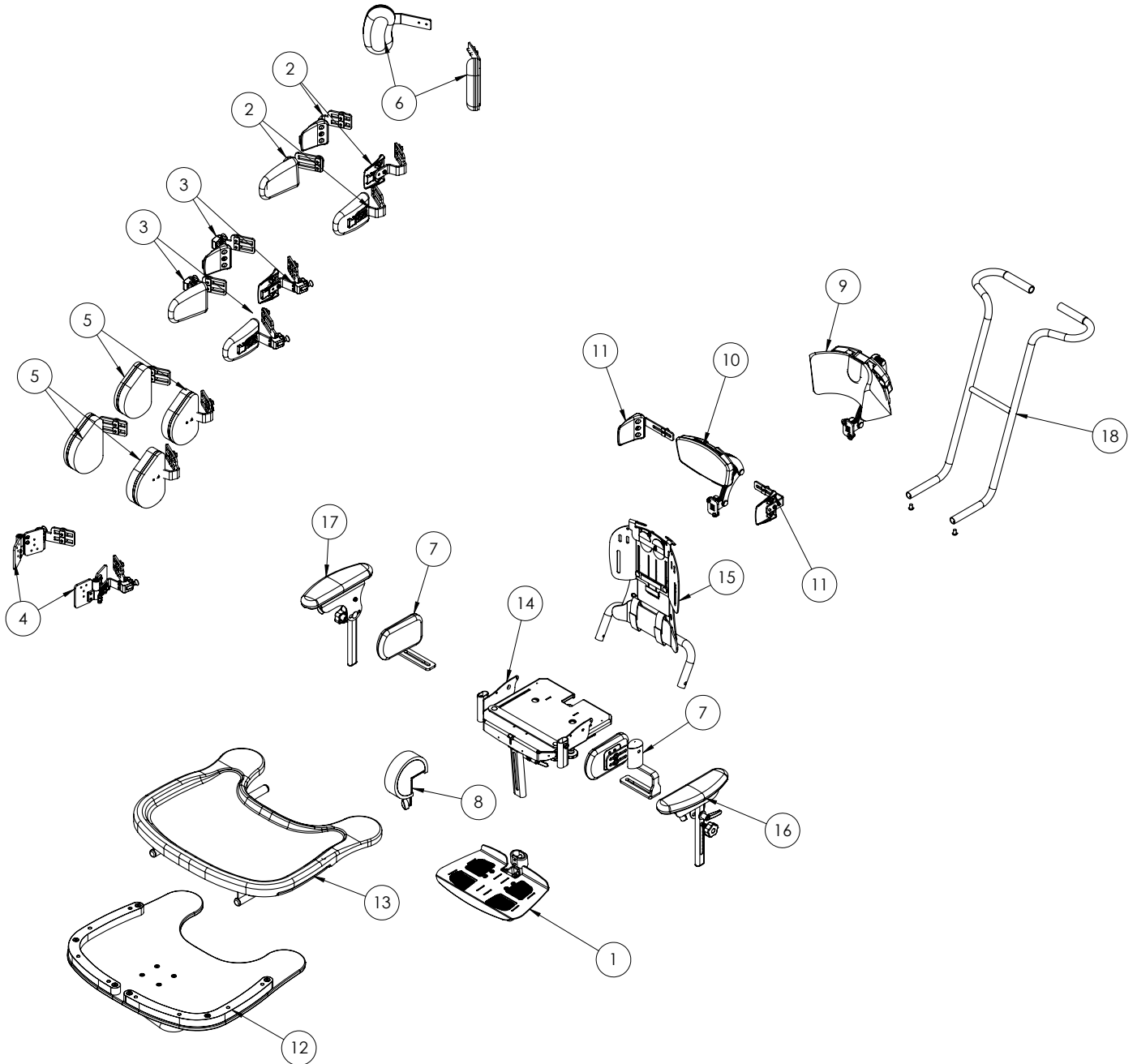


## Seat Assembly (Size 1 & 2)



## Seat Assembly (Size 1 & 2)

Pos.	Leckey Code	Description	Qty	Compatible with	
				Size 1	Size 2
1	151-1745	Size 1 One piece footplate - metal (Black)	1	✓	
1	151-2745	Size 2 One piece footplate - metal (Black)	1		✓
1	151-1746	Size 1 One piece footplate - Wooden	1	✓	
1	151-6123	Size 1 One piece footplate - metal (White)	1	✓	
1	151-6223	Size 2 One piece footplate - metal (White)	1		✓
1	151-6125	Size 1 One piece footplate - Wooden (White)	1	✓	
1	151-6232	Size 2 one piece footplate - wooden	1		✓
1	151-6235	Size 2 one piece footplate - wooden (White)	1		✓
2	151-6106-XX	Size 1 Rigid PU chest laterals pair (cover included) (Black)	1	✓	
2	151-6107-XX	Size 1 Rigid PU chest laterals pair (cover included) (White)	1	✓	
2	151-6106-XXVIN	Size 1 Rigid PU chest laterals pair (cover included) (Black)	1	✓	
2	151-6107-XXVIN	Size 1 Rigid PU chest laterals pair (cover included) (White)	1	✓	
2	151-6210-XX	Size 2 Rigid PU chest laterals pair (cover included) (Black)	1		✓
2	151-6211-XX	Size 2 Rigid PU chest laterals pair (cover included)(White)	1		✓
2	151-6210-XXXVIN	Size 2 Rigid PU chest laterals pair (cover included) (Black)	1		✓
2	151-6211-07VIN	Size 2 Rigid PU chest laterals pair (cover included)(White)	1		✓
2	151-8108-XX	S1 Rigid/Flipaway chest lateral cover (pair)	1	✓	✓
2	151-8108-XXVIN	S1 Rigid/Flipaway chest lateral cover (pair)	1	✓	✓
3	151-6108-XX	Size 1 flip away PU chest laterals pair (cover included) (Black)	1	✓	
3	151-6109-XX	Size 1 flip away PU chest laterals pair (cover included)(White)	1	✓	
3	151-6108-XXVIN	Size 1 flip away PU chest laterals pair (cover included) (Black)	1	✓	
3	151-6109-XXVIN	Size 1 flip away PU chest laterals pair (cover included)(White)	1	✓	
3	151-6212-XX	Size 2 flip away PU chest laterals pair (cover included) (Black)	1		✓
3	151-6213-XX	Size 2 flip away PU chest laterals pair (cover included)(White)	1		✓
3	151-6212-XXVIN	Size 2 flip away PU chest laterals pair (cover included) (Black)	1		✓
3	151-6213-XXVIN	Size 2 flip away PU chest laterals pair (cover included)(White)	1		✓
3	151-8208-XX	S2 Rigid/Flipaway chest lateral cover (pair)	1	✓	✓
3	151-8208-XXVIN	S2 Rigid/Flipaway chest lateral cover (pair)	1	✓	✓
4	151-1757	Size 1 complex flipaway laterals pair (Horizontal) (Black)	1	✓	
4	151-2757	Size 2 complex flipaway laterals pair (Horizontal) (Black)	1		✓
4	151-6110	Size 1 complex flipaway laterals pair (Horizontal)(White)	1	✓	
4	151-6215	Size 2 complex flipaway laterals pair (Horizontal)(White)	1		✓
5	151-6111-XX	Size 1 basic chest laterals pair (Cover included) (Black)	1	✓	
5	151-6112-XX	Size 1 basic chest laterals pair (Cover included)(White)	1	✓	
5	151-6111-XXVIN	Size 1 basic chest laterals pair (Cover included) (Black)	1	✓	
5	151-6112-XXVIN	Size 1 basic chest laterals pair (Cover included)(White)	1	✓	
5	151-6216-XX	Size 2 basic chest laterals pair (Cover included) (Black)	1		✓

## Seat Assembly (Size 1 & 2)

Pos.	Leckey Code	Description	Qty	Compatible with	
				Size 1	Size 2
5	151-6217-XXVIN	Size 2 basic chest laterals pair (Cover included)(White)	1		✓
5	151-6216-XXVIN	Size 2 basic chest laterals pair (Cover included) (Black)	1		✓
5	151-6217-XXVIN	Size 2 basic chest laterals pair (Cover included)(White)	1		✓
5	151-8215-XX	S1&S2 basic chest lateral cover (pair)	1	✓	✓
5	151-8215-XXVIN	S1&S2 basic chest lateral cover (pair)	1	✓	✓
6	151-6218-XX	Size 1 and 2 Protraction Pad pair (cover included)(Black)	1	✓	✓
6	151-6219-XX	Size 1 and 2 Protraction Pad pair (cover included)(White)	1	✓	✓
6	151-6218-XXVIN	Size 1 and 2 Protraction Pad pair (cover included)(Black)	1	✓	✓
6	151-6219-XXVIN	Size 1 and 2 Protraction Pad pair (cover included)(White)	1	✓	✓
7	151-1754	Size 1 Side pads (Pair - hardware only) (Black)	1	✓	
7	151-2754	Size 2 Side pads (Pair - hardware only) (Black)	1		✓
7	151-6113	Size 1 Side pads (Pair - hardware only) White	1	✓	
7	151-6220	Size 2 Side pads (Pair - hardware only) White	1		✓
7	151-6114-XX	Size 1 Side pads cover (pair)	1	✓	
7	151-6114-XXVIN	Size 1 Side pads cover (pair)	1	✓	
7	151-6221-XX	Size 2 Side pads cover (pair)	1		✓
7	151-6221-XXVIN	Size 2 Side pads cover (pair)	1		✓
8	151-6118-XX	Size 1 Pommel (Cover included) (Black)	1	✓	
8	151-6119-XX	Size 1 Pommel (Cover included)(White)	1	✓	
8	151-6118-XXVIN	Size 1 Pommel (Cover included) (Black)	1	✓	
8	151-6119-XXVIN	Size 1 Pommel (Cover included)(White)	1	✓	
8	151-6227-XX	Size 2 Pommel (Cover included) (Black)	1		✓
8	151-6228-XX	Size 2 Pommel (Cover included)(White)	1		✓
8	151-6227-XXVIN	Size 2 Pommel (Cover included) (Black)	1		✓
8	151-6228-XXVIN	Size 2 Pommel (Cover included)(White)	1		✓
9	151-6105-XX	Contoured headrest S1	1	✓	
9	151-6105-XXVIN	Contoured headrest S1	1	✓	
9	151-6207-XX	Contoured headrest S2	1		✓
9	151-6207-XXVIN	Contoured headrest S2	1		✓
10	151-6208-XX	Flat headrest hardware and cover (Black)	1	✓	✓
10	151-6208-XXVIN	Flat headrest hardware and cover (Black)	1	✓	✓
11	151-6209-XX	Flat headrest laterals assembly & covers (Black)	1	✓	✓
11	151-6209-XXVIN	Flat headrest laterals assembly & covers (Black)	1	✓	✓
12	151-6122	Size 1 Tray Wooden Flipaway	1	✓	
12	151-6231	Size 2 Tray Wooden Flipaway	1		✓
13	151-1644	Size 1 Tray Plastic	1	✓	
13	151-2644	Size 2 Tray Plastic	1		✓

## Seat Assembly (Size 1 & 2)

Pos.	Leckey Code	Description	Qty	Compatible with	
				Size 1	Size 2
14	151-8124	Seatbase Assembly S1 (Black)	1	✓	
14	151-8125	Seatbase Assembly S1(White)	1	✓	
14	151-8224	Seatbase Assembly S2 (Black)	1		✓
14	151-8225	Seatbase Assembly S2(White)	1		✓
14	151-8277	Extended Seatbase Assembly S2 (Black)	1		✓
14	151-8278	Extended Seatbase Assembly S2(White)	1		✓
15	151-8126	Backrest Assembly S1 (Black)	1	✓	
15	151-8127	Backrest Assembly S1(White)	1	✓	
15	151-8226	Backrest Assembly S2 (Black)	1		✓
15	151-8227	Backrest Assembly S2(White)	1		✓
16	151-8128	Size 1 armrest (LH) (Black)	1	✓	
16	151-8129	Size 1 armrest (LH) (White)	1	✓	
16	151-8228	Size 2 armrest (LH) (Black)	1		✓
16	151-8229	Size 2 armrest (LH)(White)	1		✓
17	151-8130	Size 1 armrest (RH) (Black)	1	✓	
17	151-8131	Size 1 armrest (RH)(White)	1	✓	
17	151-8230	Size 2 armrest (RH) (Black)	1		✓
17	151-8231	Size 2 armrest (RH)(White)	1		✓
18	151-8271	Removable handle bar Assy-Black	1	✓	✓
18	151-8272	Removable handle bar Assy-White	1	✓	✓